

SPECIFICATION DATA:



Item Name	: Steel warehouse shelving
Model No.	: JF-R07
Product Size	: H2000 * W2000 * D600mm
Packing Volume	: 0.5000CBM
Loading Qty	: 56 pcs/20GP, 136 pcs/40HQ
Material	: Heavy gauge cold-rolled steel plate
Thickness	: Post:1.2mm, other:0.8mm
Finish	: Durable electrostatic powder coating
Warranty	: 10 Years

Description

Pre-treatment : Water wash, chemical wash, phosphating.

Colour : Classic grey, two-tone option, or other customized colour.

Features

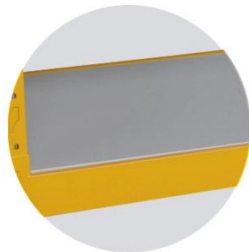
- Knock down and easy assembling construction.
- With huge loading capacity (about 300kg) for each shelf.
- Reinforced shelves for strength.
- Different colour for option.
- Height of shelves are adjustable.

Details

· Corner



· Upright



· Shelf



· Junction

