

SPECIFICATION DATA:



Item Name	: Steel Office Tables
Model No.	: JF-D20
Product Size	: H750 * W1200 * D600mm
Packing Volume	: 0.0820CBM
Loading Qty	: 341 pcs/20GP, 829 pcs/40HQ
Material	: Cold-rolled steel plate, MDF top
Thickness	: 0.6-0.8MM
Finish	: Durable electrostatic powder coating
Warranty	: 10 Years

Description

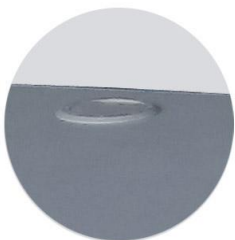
- Pre-treatment : Water wash, chemical wash, phosphating.
 Colour : Classic grey, two-tone option, or other customized colour.
 Fittings : 2 sliding keyboard drawers.
 Accessories : Assembly screws.

Features

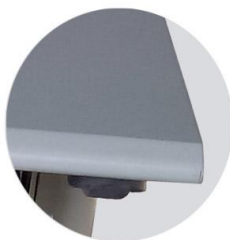
- Knock down and easy assembling construction.
- Different colour for option.
- With rubber protection for feet.
- Two small drawers.
- Smooth full extension metal ball bearing runners.

Details

· Hole



· MDF Top



· Keyboard Sliders



· Stand Feet



· Different Color

