

## SPECIFICATION DATA:



Item Name	: Metal Cabinet Bed
Model No.	: JF-B12
Product Size	: H2000 * W2000 * D900mm
Packing Volume	: 0.7100CBM
Loading Qty	: 39 pcs/20GP, 95 pcs/40HQ
Material	: Heavy gauge cold-rolled steel plate
Thickness	: Bed: 1.2*1.0MM; Others: 0.5MM
Finish	: Durable electrostatic powder coating
Warranty	: 10 Years

## Description

- Pre-treatment : Sandblasting, water wash, chemical wash, phosphating.
- Colour : Classic grey, two-tone option, or other customized colour.
- Fittings : Clothing locker, study table.
- Accessories : 6 keys, assembly screws.

## Features

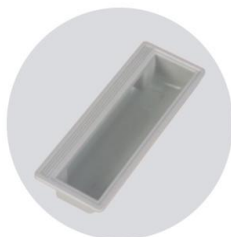
- Knock down and easy assembling construction.
- Different colour for option.
- Various designs for choice.
- Steel frame base, strong with good stability.
- Wide stair for climbing easily.
- Long guard bar is arranged on the top tier, safer in a degree.

## Details

· Cam Lock



· Plastic Handle



· Bookcase



· Corner Structure



· Built-in Ladder

