

## SPECIFICATION DATA:



Item Name	: 4 Door Metal Commercial Lockers
Model No.	: JF-2B2A
Product Size	: H1850*W900*D450mm
Packing Volume	: 0.1322CBM
Loading Qty	: 211 pcs/20GP, 514 pcs/40HQ
Material	: Heavy gauge cold-rolled steel plate
Thickness	: 0.5-1.0MM
Finish	: Durable electrostatic powder coating
Warranty	: 10 Years

## Description

- Pre-treatment : Water wash, chemical wash, phosphating.
- Colour : Classic grey, two-tone option, or other customized colour.
- Fittings : Chrome coat rod, index holder, keyed camlock or padlock latch.
- Accessories : 8 keys, assembly screws.

## Features

- Knock down and easy assembling construction.
- Different locks for option.
- Different colour for option.
- Different air ventilation for option.
- Standing legs available.
- Sloping top available.
- Master key available.
- Core removable lock available.

## Details

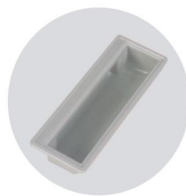
· Pad lock



· Ventilation



· Plastic Handle



· Label Holder



· Stand Feet

