

SPECIFICATION DATA:



Item Name	: 20 Door Employee Lockers
Model No.	: JF-5B4A
Product Size	: H1720 * W1360 * D450mm
Packing Volume	: 0.1916CBM
Loading Qty	: 146 pcs/20GP, 310 pcs/40HQ
Material	: Heavy gauge cold-rolled steel plate
Thickness	: 0.5-1.0MM
Finish	: Durable electrostatic powder coating
Warranty	: 10 Years

Watch Assembling Video: <https://www.hefeng-furniture.com/video/20-door-lockers/>

Description

- Pre-treatment : Water wash, chemical wash, phosphating.
- Colour : Classic grey, two-tone option, or other customized colour.
- Fittings : Index holder, keyed camlock or padlock latch.
- Accessories : 40 keys, assembly screws.

Features

- Knock down and easy assembling construction.
- Different locks for option.
- Different colour for option.
- Different air ventilation for option.
- Standing legs available.
- Sloping top available.
- Master key available.
- Core removable lock available.

Details

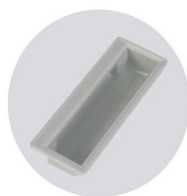
· Pad lock



· Ventilation



· Plastic Handle



· Label Holder



· Stand Feet

